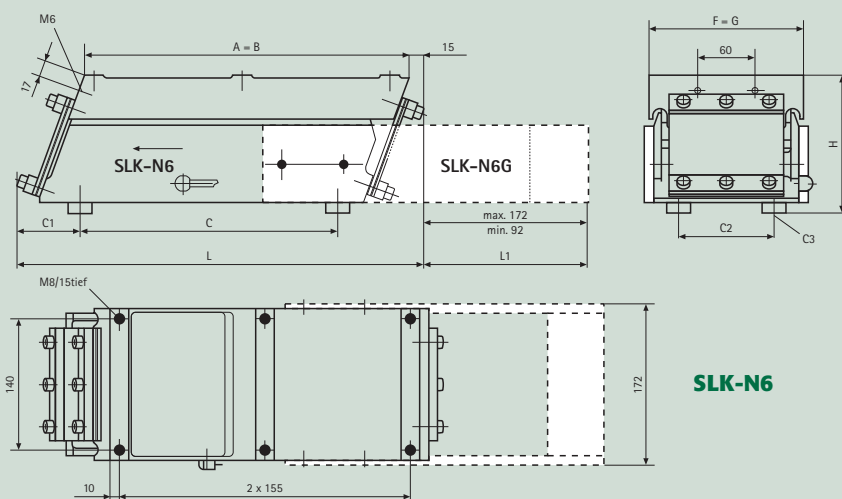
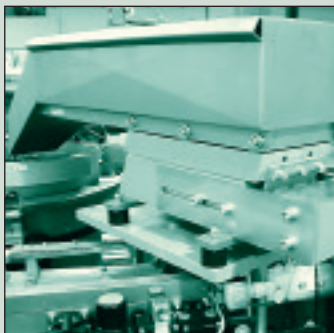
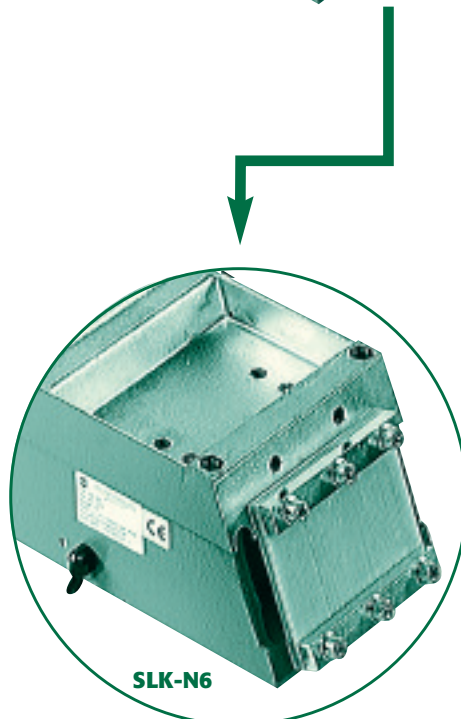
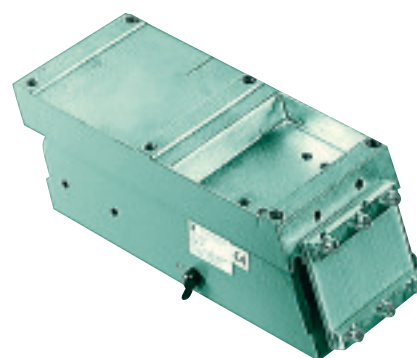


Series SLK



In order to achieve the best performance, we recommend the fitting of counter weights where there is extended track on the discharge side **[SLK-N6 (G)]**.



Type	SLK-N6	SLK-N6 (G)
A = Vibrator top length	340	340
B = Length of counter mass	340	340
C = Fastening measure	270	270
C1 =	66	66
C2 =	100	100
C3 =	4 x M6	4 x M6
F = Total width	162	162
G = Vibrator top width	162	162
H = Total height	143	143
L = Total length	426	426
L1 = Total length	-	min. 92, max. 172
Weight of the linear feeder drive unit	22,3 kg	35 kg
Max. load of the linear track (Including Components)	5 – 8,5 kg	5 – 8,5 kg
Max. track length	800	800
Current input	1,25 (A)	1,25 (A)
Protection class	IP 54	IP 54
Vibrating frequency	50 Hz	50 Hz
Connection cable (to control box)	1.850	1.850
Suitable stand type		
(see page 18)	UTL 2	UTL 2

Voltage 200V/50 Hz. Available with special voltages 110V/220V and frequencies 50Hz/60Hz

The difference between track length and vibrator top length should be mounted to a ratio of: 1/3 infeed side 2/3 discharge side

